

FOLD LINE

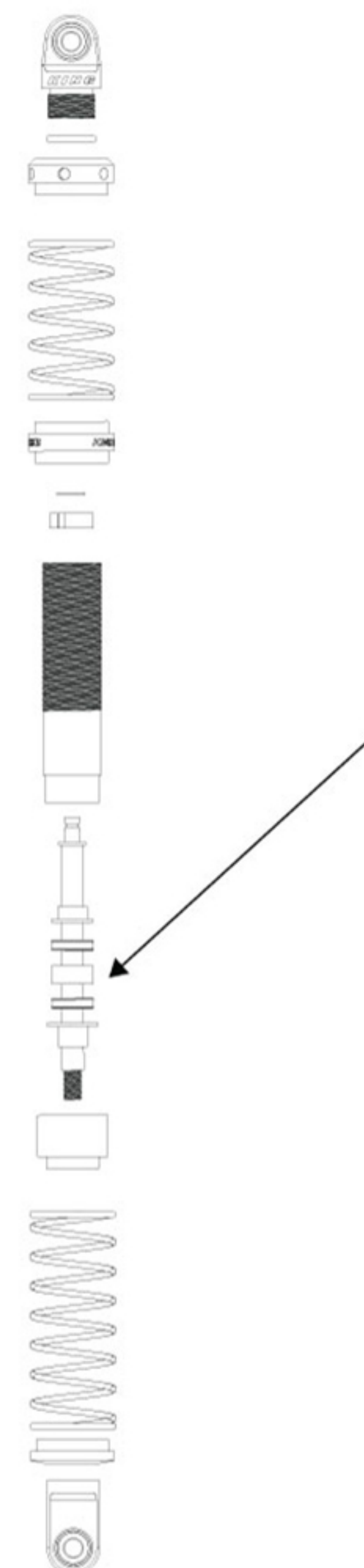
180mm



An additional spacer is included for shock tuning. This will allow you to tune how hard the x-rings are compressed in the cartridge. The factory installed spacer compresses the x-rings to ensure shock oil leaks are kept to a minimum. The additional spacer can be used to relieve pressure on the x-rings, allowing the shaft to move more freely. This may cause some shock oil to escape the shock during operation.

To help prevent this it is recommended to rebuild the cartridge of the shock with some thick shock grease which can be obtained at your local hobby shop, or an online store.

www.RC4WD.com | support@RC4WD.com



100mm